

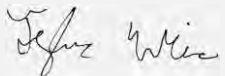
3000mg/oz Distillate w/Terpenes

Batch ID:	10071-04	Test ID:	T000086984
Reported:	24-Jul-2020	Method:	TM04
Type:	Concentrate		
Test:	Residual Solvents		

RESIDUAL SOLVENTS

Solvent	Dynamic Range (ppm)	Result (ppm)
Propane	73 - 1463	*ND
Butanes (Isobutane, n-Butane)	145 - 2906	*ND
Methanol	52 - 1042	*ND
Pentane	78 - 1560	*ND
Ethanol	76 - 1528	*ND
Acetone	86 - 1718	*ND
Isopropyl Alcohol	88 - 1757	*ND
Hexane	5 - 104	*ND
Ethyl Acetate	85 - 1710	*ND
Benzene	0.2 - 3.4	*ND
Heptanes	81 - 1627	*ND
Toluene	16 - 311	*ND
Xylenes (m,p,o-Xylenes)	112 - 2239	*ND

* ND = None Detected (Defined by Dynamic Range of the method)

NOTES:
N/A**FINAL APPROVAL**
Tyler Wiese
24-Jul-2020
5:40 PM

PREPARED BY / DATE


Greg Zimpfer
24-Jul-2020
6:27 PM

APPROVED BY / DATE

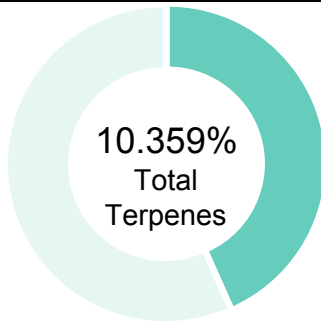
Testing results are based solely upon the sample submitted to Botanacor Laboratories, LLC, in the condition it was received. Botanacor Laboratories, LLC warrants that all analytical work is conducted professionally in accordance with all applicable standard laboratory practices using validated methods. Data was generated using an unbroken chain of comparison to NIST traceable Reference Standards and Certified Reference Materials. This report may not be reproduced, except in full, without the written approval of Botanacor Laboratories, LLC. ISO/IEC 17025:2005 Accredited A2LA Certificate Number 4329.02



Certificate #4329.02

3000mg/oz Distillate w/Terpenes

Batch ID:	10071-04	Test ID:	5717909.008
Reported:	24-Jul-2020	Method:	TM10
Type:	Concentrate		
Test:	Terpenes		

TERPENE PROFILE


Compound	%(w/w)	mg/g
(-)-alpha-Bisabolol	4.523	45.23
Camphene	2.377	23.77
delta-3-Carene	0.000	0
beta-Caryophyllene	0.000	0
(-)-Caryophyllene Oxide	0.000	0
p-Cymene	0.000	0
Eucalyptol	0.000	0
Geraniol	0.000	0
alpha-Humulene	0.000	0
(-)-Isopulegol	0.000	0
d-Limonene	0.000	0
Linalool	0.000	0
beta-Myrcene	0.000	0
cis-Nerolidol	0.000	0
trans-Nerolidol	0.000	0
Ocimene	0.000	0
beta-Ocimene	0.000	0
alpha-Pinene	0.000	0
(-)-beta-Pinene	0.000	0
alpha-Terpinene	3.459	34.59
gamma-Terpinene	0.000	0
Terpinolene	0.000	0
	10.359%	103.59



PREDOMINANT TERPENES

alpha-Pinene	0.000%
(-)-beta-Pinene	0.000%
beta-Myrcene	0.000%
delta-3-Carene	0.000%
alpha-Terpinene	3.459%
d-Limonene	0.000%
Linalool	0.000%
beta-Caryophyllene	0.000%
alpha-Humulene	0.000%
(-)-alpha-Bisabolol	4.523%

NOTES:

0

FINAL APPROVAL

 Michelle Gagnon 24-Jul-2020 3:15 PM	 Greg Zimpfer 24-Jul-2020 3:16 PM
--	---

PREPARED BY / DATE

APPROVED BY / DATE

Testing results are based solely upon the sample submitted to Botanacor Laboratories, LLC. Botanacor Laboratories, LLC warrants that all analytical work is conducted professionally in accordance with all applicable standard laboratory practices using validated methods. Data was generated using an unbroken chain of comparison to NIST traceable Reference Standards and Certified Reference Materials. This report may not be reproduced, except in full, without the written approval of Botanacor Laboratories, LLC. ISO/IEC 17025:2005 Accredited A2LA Certificate Number 4329.02

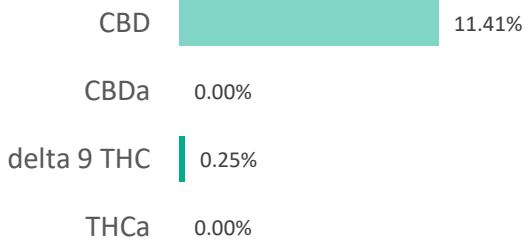
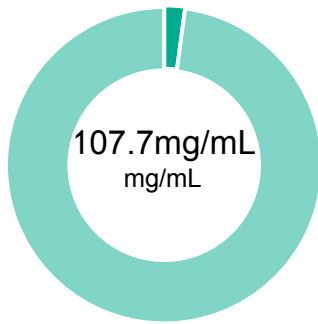


Certificate #4329.02

3000mg/oz Distillate w/Terpenes

Batch ID:	10071-04	Test ID:	2220823.003
Reported:	22-Jul-2020	Method:	TM14
Type:	Solution		
Test:	Potency		

CANNABINOID PROFILE




Compound	LOQ (mg/mL)	Result (mg/mL)	Result (mg/g)
Delta 9-Tetrahydrocannabinolic acid (THCA-A)	0.49	ND	ND
Delta 9-Tetrahydrocannabinol (Delta 9THC)	0.24	2.30	2.5
Cannabidiolic acid (CBDA)	0.73	ND	ND
Cannabidiol (CBD)	0.41	107.70	114.1
Delta 8-Tetrahydrocannabinol (Delta 8THC)	0.27	ND	ND
Cannabinolic Acid (CBNA)	0.67	ND	ND
Cannabinol (CBN)	0.30	ND	ND
Cannabigerolic acid (CBGA)	0.43	ND	ND
Cannabigerol (CBG)	0.24	18.00	19.1
Tetrahydrocannabivarinic Acid (THCVA)	0.42	ND	ND
Tetrahydrocannabivarin (THCV)	0.22	ND	ND
Cannabidivarinic Acid (CBDVA)	0.68	ND	ND
Cannabidivarin (CBDV)	0.37	ND	ND
Cannabichromenic Acid (CBCA)	0.36	ND	ND
Cannabichromene (CBC)	0.44	20.70	22.0
Total Cannabinoids		148.70	157.56
Total Potential THC**		2.30	2.47
Total Potential CBD**		107.70	114.06

% = % (w/w) = Percent (Weight of Analyte / Weight of Product)
 * Total Cannabinoids result reflects the absolute sum of all cannabinoids detected.
 ** Total Potential THC/CBD is calculated using the following formulas to take into account the loss of a carboxyl group during decarboxylation step.
 Total THC = THC + (THCa * (0.877)) and Total CBD = CBD + (CBDa * (0.877))
 ND = None Detected (Defined by Dynamic Range of the method)

NOTES:
 Density = 0.944036g/mL
 N/A

FINAL APPROVAL


 Ryan Weems
 22-Jul-2020
 1:06 PM


 Greg Zimpfer
 22-Jul-2020
 2:27 PM

PREPARED BY / DATE

APPROVED BY / DATE

Testing results are based solely upon the sample submitted to Botanacor Laboratories, LLC, in the condition it was received. Botanacor Laboratories, LLC warrants that all analytical work is conducted professionally in accordance with all applicable standard laboratory practices using validated methods. Data was generated using an unbroken chain of comparison to NIST traceable Reference Standards and Certified Reference Materials. This report may not be reproduced, except in full, without the written approval of Botanacor Laboratories, LLC. ISO/IEC 17025:2005 Accredited A2LA Certificate Number 4329.02

